

NORWALK RIVER ENVIRONMENTAL STUDY AREA



ACCESS/PARKING:

- Route 7, east side, north of Simpaug Turnpike and south of the Norwalk River Bridge. [GPS Address:468 Ethan Allen Highway]
- Simpaug Turnpike, west shoulder, in Redding near two old driveway entrances blocked with boulders. [GPS Address: 10 Simpaug Turnpike]

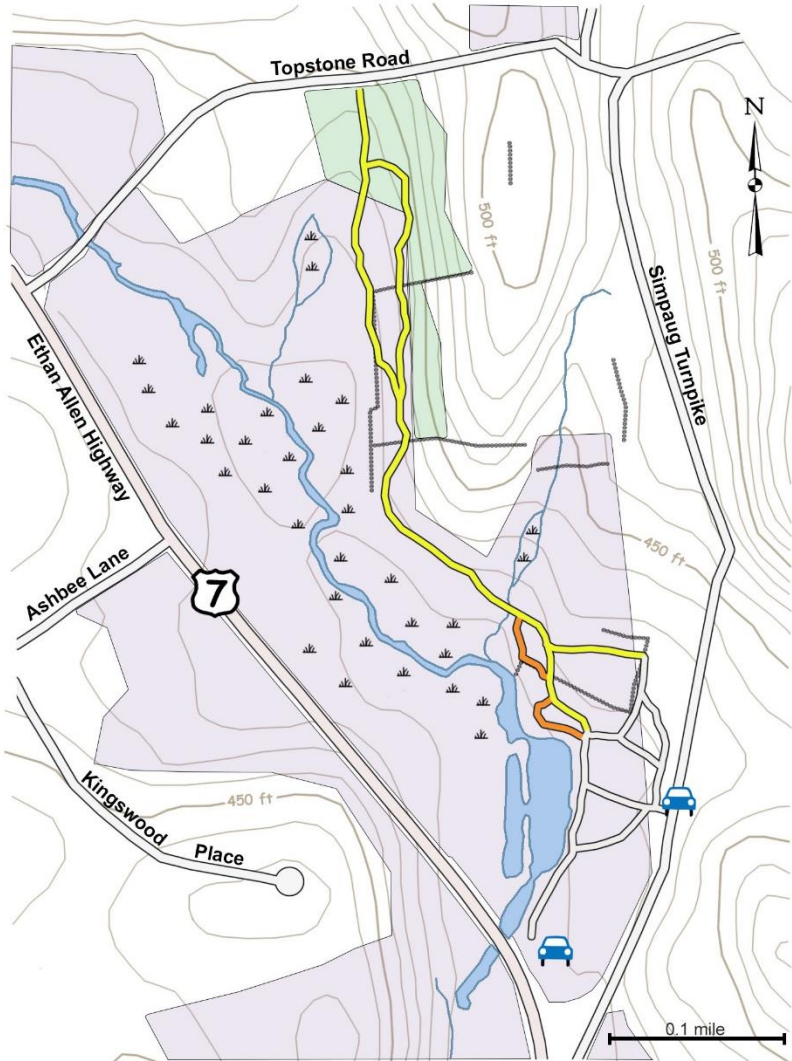
DIFFICULTY: Easy. 20 minutes

FEATURES: Trails lead to the Norwalk River at several points in this 6-acre area. The river pond is stocked by the State for fishing. A seasonal pond near Simpaug Turnpike provides a breeding habitat for insects and amphibians. Wildflowers and wildlife, butterflies and birds, in particular, abound.




The area links to the Topstone Preserve with ready access using Topstone Road.

HISTORY: This State-owned area, used for flood control, offers a view of a watershed and its various habitats in action.

NORWALK RIVER ENVIRONMENTAL STUDY AREA



Legend

-  Town Open Space
-  State Open Space
-  Trails

-  Pathways
-  Parking
-  Stone wall
-  Wetlands