

ACCESS/PARKING:

- Barlow Mountain Road north of the intersection with North Street. [GPS Address: 58 Barlow Mountain Road]
- Cul-de-sac at the end of Pinecrest Drive. [GPS Address: 34 Pinecrest Drive]
- Knollwood Drive at Old Barlow Mountain Road. [GPS Address: 50 Barlow Mountain Road] The parking area is up around the corner of this location.
- There is walking access from the Liebowitz-Knapp Sanctuary.

DIFFICULTY: White trail starts easy then becomes difficult leading to Barlow Mountain. Blue varies from easy to difficult. All other trails are easy.

FEATURES: Over 2 miles of trails wind through a deciduous forest of oak, birch, chestnut oak, tulip, and hickory. There are five trails:

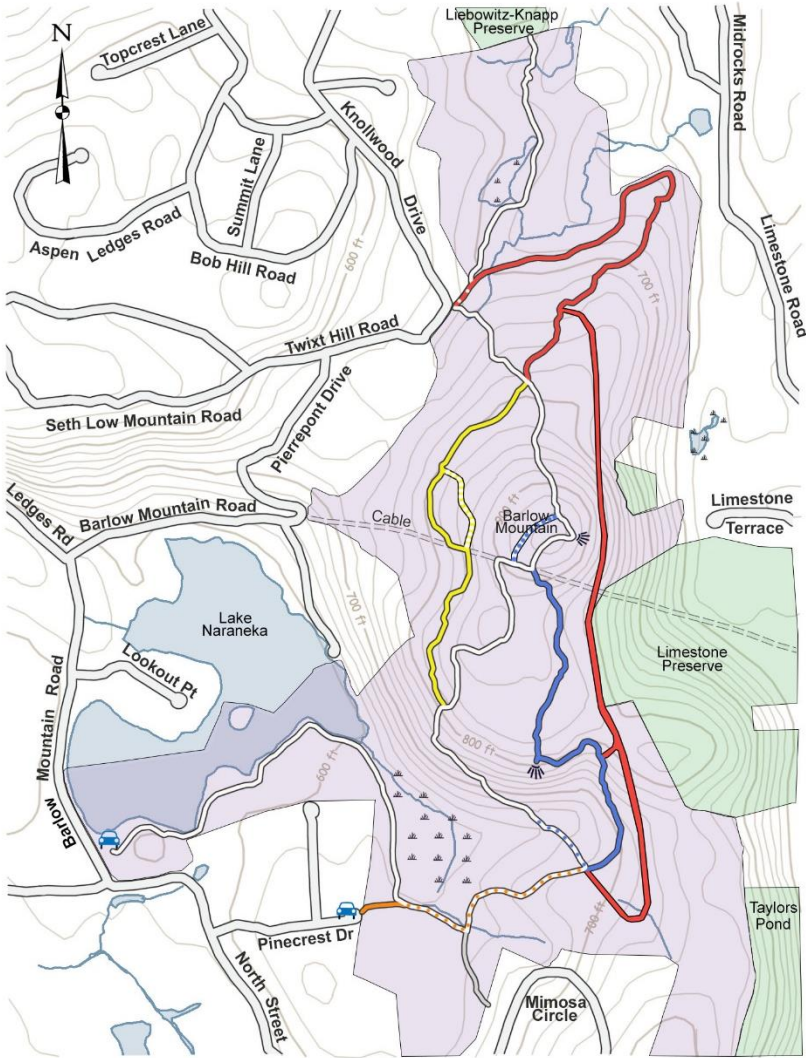


- The White trail goes around Pierrepont Lake and then follows a stream to the junction with the blue trail loop. It continues upward toward the summit (950 feet) then down ending at the Liebowitz-Knapp Preserve.
- The Blue trail crosses the stream and follows it to its source in the head of a canyon.
- The Yellow trail offers a more level by-pass loop off the white trail.
- The Orange trail is short, between the Blue trail and Pinecrest Drive.
- The Red trail follows the Old Barlow

Mountain Road and connects with the junction of the White and Yellow trails.

Two overlooks offer excellent views of the surrounding countryside. One on the White trail is near the top of Barlow Mountain, and the outcropping on the Blue trail offers scenic views. Non-motorized boating is permitted.

HISTORY: General Wooster led his troops down Old Barlow Mountain Road during the Revolutionary War. An old foundation of the Scott house dating from the 1720s can be seen at the boat launch area. The stone walls and enclosures in the park were built by the Scott family when they farmed the land. Donated to Connecticut by Ridgefield resident Seth Low Pierrepont.



Legend

- Open Space
- State Town
- Trails



Parking



View



Wetlands

0.25 miles